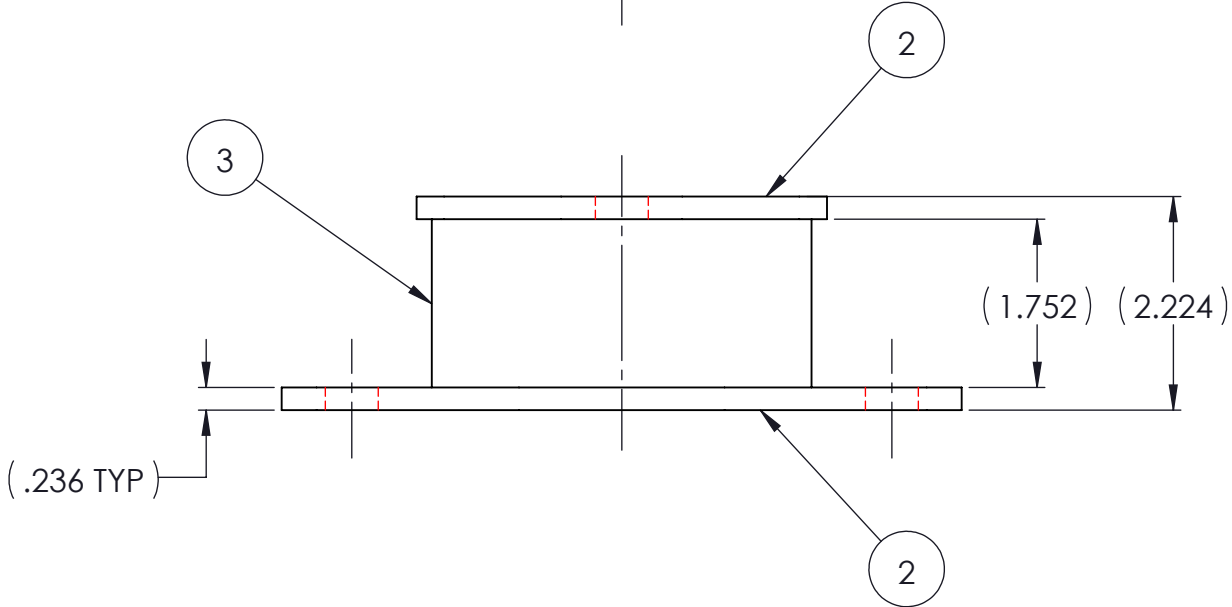
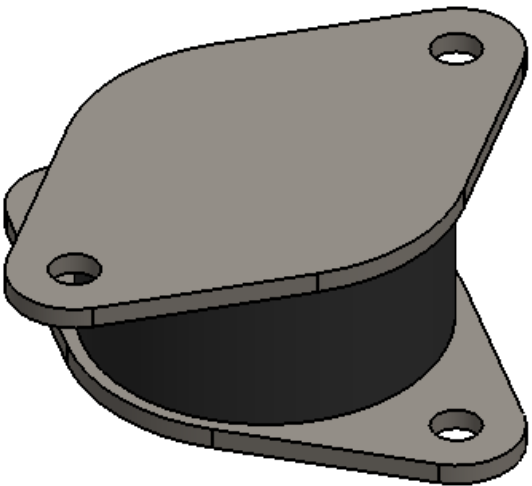
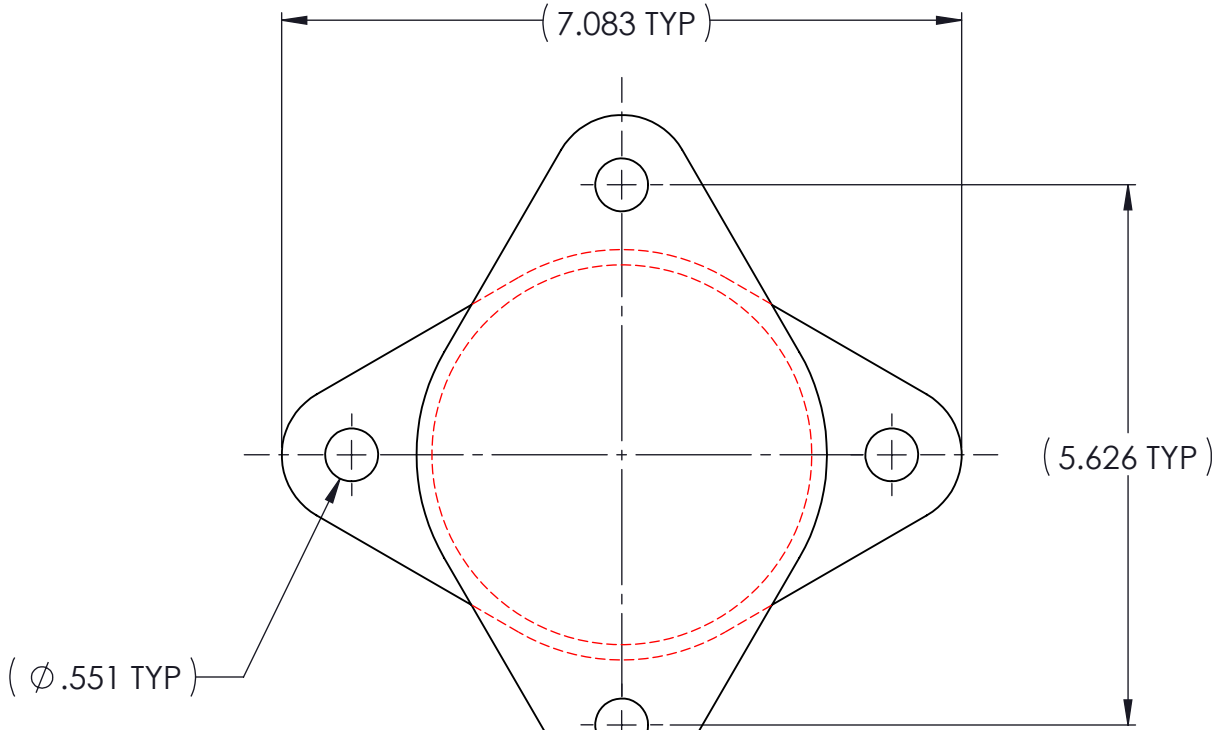


REVISIONS			
REV.	DESCRIPTION	DATE	APPROVED
1	INITIAL RELEASE OF DRAWING	6/1/2015	BS



NOTES:

- 1 MATERIAL: ELASTOMER AND DUROMETER OF 40, 50, 60 OR 70 TO BE SPECIFIED.
2 ALL DIMENSONS ARE REFERENCE.

PROPRIETARY AND CONFIDENTIAL THE INFORMATION CONTAINED IN THIS DRAWING IS THE SOLE PROPERTY OF KARMAN RUBBER. ANY REPRODUCTION IN PART OR AS A WHOLE WITHOUT THE WRITTEN PERMISSION OF KARMAN RUBBER IS PROHIBITED.	SIGNATURE		DATE
	DRAWN	B. SENECA	06/01/2015
	CHECK	S. BROWN	06/01/2015
	ENGR	B. SENECA	06/01/2015
	QA		
	STRESS		
	APPR		

UNLESS OTHERWISE SPECIFIED:
DIMENSIONS ARE IN INCHES
TOLERANCES:
.X =
.XX = ± 0.031
.XXX =
ANGLES = $\pm 1^\circ$
INTERPRET GEOMETRIC TOLERANCING PER: ASME Y14.5M-1994

KARMAN RUBBER VIBRO-INSULATORS
FOR CONTROLLING NOISE, SHOCK & VIBRATION

SIZE	CAGE CODE
B	
DO NOT SCALE DRAWING	

TITLE: K5 SERIES COMPRESSION MOUNT WWW.KARMAN.COM			
DWG. NO. K5		REV 1	
SCALE: 1:2	WEIGHT: N/A	SHEET 1 OF 1	

AR	ELASTOMER	K5-3	1	3
2	MK5	MK5		2
	K5	K5		1
QTY.	DESCRIPTION	PART NUMBER	MATERIAL OR NOTES	ITEM